

Pan Delta Super Racing Festival

2019

Circuit Hero

Technical Regulations

1. Vehicles that comply with the conditions

1.1 Classes

Supercar Challenge Class: GT race cars approved by the organizer.

Supercar A class: GT3 race cars approved by the organizer.

Supercar B1 class: Supercars with engines not larger than 4,000cc and approved by the organizer.

Supercar B2 class: GT4 races cars approved by the organizer.

Supercar C class: GT or supercars approved by the organizer; or race cars that comply with the following race series technical regulations:

- Porsche Carrera Cup Asia;
- Ferrari Challenge Asia Pacific;
- Lamborghini Super Trofeo;
- Audi R8 LMS Cup;

1.2 The following car models are not accepted:

- Ginetta-G55
- TTX、Caterham、Metal frame kit cars.

1.3 The race committee reserves the rights to:

- a) Accept/Refuse a car
- b) Reclassify a car in the interest of competition

2. Tyres

Race organizer specified tyres must be used.

3. Seats

Must comply with the FIA's safety requirements.

4. Safety belts

Must comply with the FIA's safety requirements.

5. Roll cages

Must comply with the FIA's safety requirements.

6. Fire extinguishers

All vehicles must install fire extinguishers in accordance with Article 253 of Appendix J. BCF and NAF types are not permitted.

7. Rear view mirrors

7.1 There must be a total of 2 (two) rear view mirrors, one on each side of the vehicle.

7.2 The minimum area of each rear view mirror must not be less than 100 sq cm. It must offer clear views of the cars behind.

8. Nets

8.1 GT3 series race cars – window nets must comply with FIA257A-3.2.2 specifications.

8.2 GT3 series race cars – safety nets must comply with FIA257A-14.9 specifications, also comply with FIA8863-2013 standard.

8.3 Race cars from other series must comply with FIA253-11 standard.
The chief scrutineer's decision is final.

9. Exhaust system

No restriction on exhaust system, but when under FIA noise level tests, the noise level must not exceed 120 dB(A) at 3,800 r.p.m.

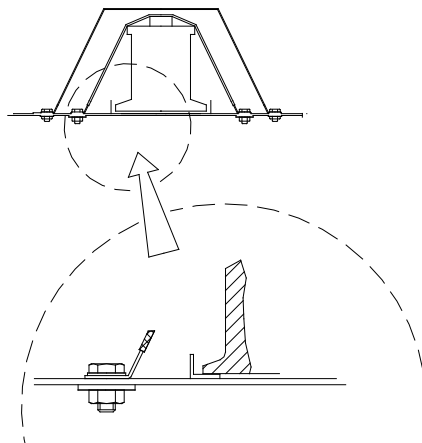
10. Fuel samples

Sealed connectors must be in place. Scrutineers must be able to collect fuel sample from the car using this device. The connector is listed in FIA technical list 05. – “Fuel sample connectors”. The teams must provide the fuel lines for the scrutineer to collect fuel samples.

11. Battery

The battery must be installed on the chassis and protected by insulation materials. The connection part with the body must be registered according to OV regulations, or has a metal frame with 2 safety pins, with its insulated cover fixed to the floor by bolts. Nuts and bolts must have a minimum diameter of 10mm and each bolt must turn in at least 3mm. Minimum metal body part contact area is 20 sq cm (See Drawing 255-11).

Drawing 255-11



12. General Circuit Breaker

FIA article 253-13 of Appendix J

The general circuit breaker must cut all electrical circuits, battery, alternator or dynamo, lights, hooters, ignition, electrical controls, etc. and must also stop the engine.

It must be a spark-proof model, and must be accessible from inside and outside the car.

As for the outside, the triggering system of the circuit breaker must compulsorily be situated at the lower part of the windscreen mountings for closed cars. It must be marked by a red spark in a white-edged blue triangle.

13. Towing Eye

All cars must be equipped with a rear and front towing – eye for all competitions.

This towing – eye will only be used if the car can move freely. It must be clearly visible and painted in yellow , red or orange.

The size of the tow hook must be calculated in the overall vehicle size.

14. Steering

The steering lock must be dismantled and the column adjusting system must be locked.

15. Engine change

Refer to article 46 of Sporting Regulations.

16. Interpretation

The final text of these Technical Regulations shall be the Chinese version which will be used should any dispute arise as to their interpretation.